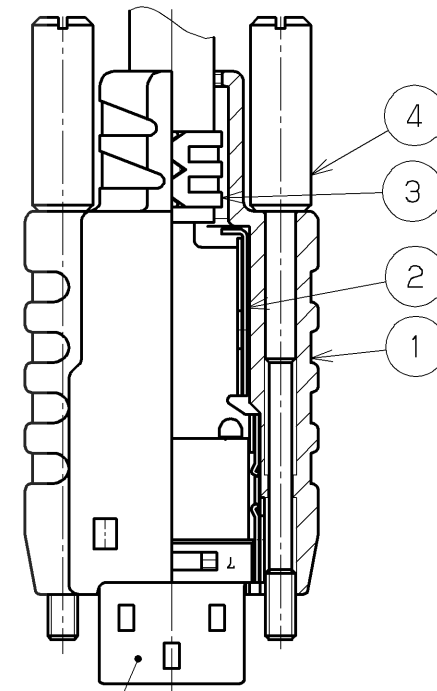
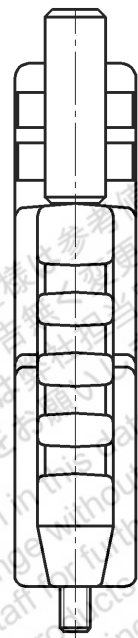


SCREW SIZE
M2X0.4



Connector
HDR-E14F () G () +
HDR-E14M () G () +

AFTER ASSEMBLY DRAWING

掲載している商品の特性及び仕様は参考情報です。予告なく変更する場合があります。お問い合わせのうえ、採用のご検討やご注文の際は必ず最新仕様書を取り交わしをお願いします。
This product information is for reference only. Contact our sales staff for further information before considering or ordering any of our products. Please request Engineering Drawing for the most current and accurate design information.

HTK

					4	THUMB SCREW	STEEL	2	NICKEL PLATING	——
△					3	INNER SHELL A	STAINLESS STEEL	1	NICKEL PLATING	——
△					2	INNER SHELL B	STAINLESS STEEL	1	NICKEL PLATING	——
△					1	PLASTIC COVER	PBT RESIN	1	——	UL94V-0 BLACK
LTR.	DATE	BY	REV.	DESCRIPT	No.	PART NAME	MATERIAL	QTY	FINISH	NOTE
DATE		SCALE		UNIT		3RD. A. P				
July.25.2017		2 / 1		mm (INCH)						
APP. DATE&REV.						HTK HONDA TSUSHIN KOGYO CO., LTD.				
DR.	DE.	CHK.	CHK.	APP.	NAME		HDR-E TYPE CABLE COVER			
S. MURAKAMI	S. MURAKAMI	S. YOSHIDA	——	Y. KATO	PART NO.		HDR-E14LPHP+			REV.