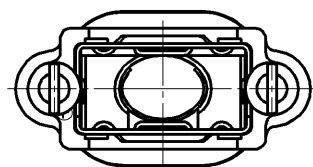


Connector  
 HDR-E14F ( ) G ( ) +  
 HDR-E14M ( ) G ( ) +

AFTER ASSEMBLY DRAWING



掲載している商品の特性及び仕様は参考情報です。予告なく変更する場合があります。お問い合わせの際は、必ず最新仕様書をご確認ください。The product information in this drawing is for reference only. This is subject to change without notice. Contact our sales staff for further information before considering or ordering any of our products. Please request Engineering Drawing for the most current and accurate design information.

HTK

5	PLATE (FOR LOCK SCREW)	STEEL	1	NICKEL PLATING	$t = 1.0$ M2 X 0.4
4	LOCK SCREW	STEEL	2	NICKEL PLATING	—
3	INNER SHELL A	STAINLESS STEEL	1	NICKEL PLATING	—
2	INNER SHELL B	STAINLESS STEEL	1	NICKEL PLATING	—
1	PLASTIC COVER	PBT RESIN	1	—	UL94V-0 BLACK

LTR.	DATE	BY	REV.	DESCRIPT	No.	PART NAME	MATERIAL	QTY	FINISH	NOTE
------	------	----	------	----------	-----	-----------	----------	-----	--------	------

DATE		SCALE		UNIT		3RD. A. P		<b>HTK</b> HONDA TSUSHIN KOGYO CO., LTD.		
July.25.2017		2 / 1		mm (INCH)						
APP. DATE&REV.										
DR.	DE.	CHK.	CHK.	APP.	NAME		HDR-E TYPE CABLE COVER			
S. MURAKAMI	S. MURAKAMI	S. YOSHIDA	—	Y. KATO	PART NO.		HDR-E14LPHPD+			
								REV.		