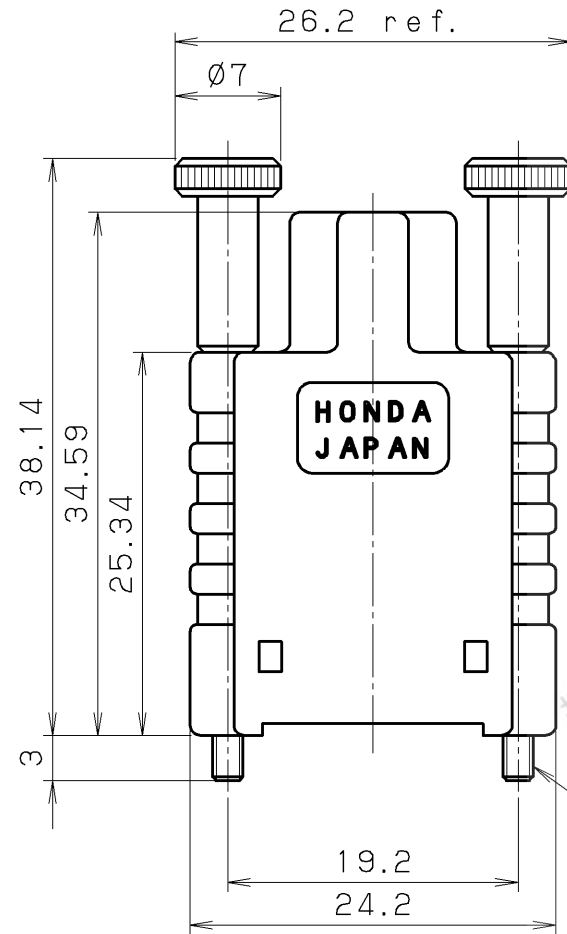
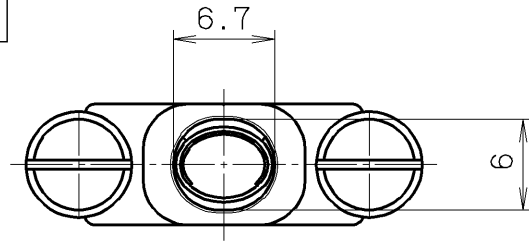
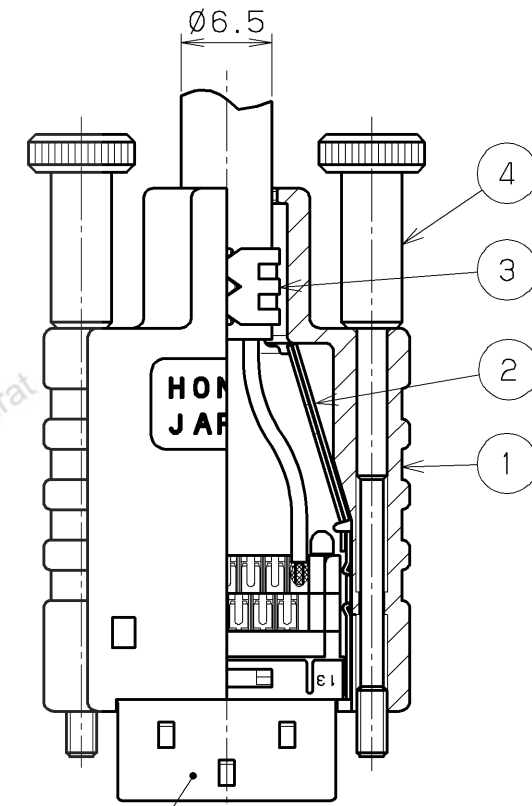
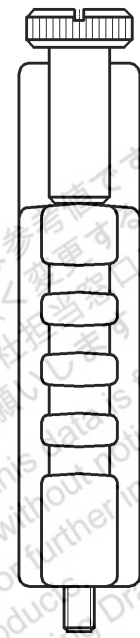


RoHS compliant



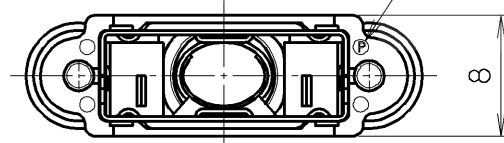
Screw size
M2x0.4



Connector (Note. #1)
HDR-E26F () G () +
HDR-E26M () G () +

After assembly drawing

Identification mark



Note

1. Connector is not included in P/N: HDR-E26LPHP2+.
2. This drawing shows assembled for reference. Thumb screws are assembled to plastic cover. Inner shell A and B are supplied unassembled.

掲載している商品の特性及び仕様は参考です。特性及び仕様については、予告無く変更する場合があります。採用のご検討やご注文の際は弊社営業窓口までお問い合わせのうえ、納品仕様書の取り交わしをお願いします。
This is subject to change without notice. Contact our sales staff for further information before considering or ordering any of our products. Please request Engineering Drawing for the most current and accurate design information.

LTR.	DATE	BY	REV.	DESCRIPT	No.	PART NAME	MATERIAL	QTY	FINISH	NOTE
					4	Thumb screw	Steel	2	Nickel plating	
					3	Inner shell A	Stainless steel	1	Nickel plating	
					2	Inner shell B	Stainless steel	1	Nickel plating	
	Jan.19 2018	S. M	Revise		1	Plastic cover	PBT RESIN	1		UL94V-0 Black
DATE: July.12.2017						SCALE: 2 / 1	UNIT: mm (INCH)	3RD. A. P		
APP. DATE&REV.						HTK HONDA TSUSHIN KOGYO CO., LTD.				
DR.	DE.	CHK.	CHK.	APP.	NAME		HDR-E type cable cover (RoHS)			
S. MURAKAMI	S. MURAKAMI	S. YOSHIDA	—	Y. KATO	PART NO.		HDR-E26LPHP2+ REV.			