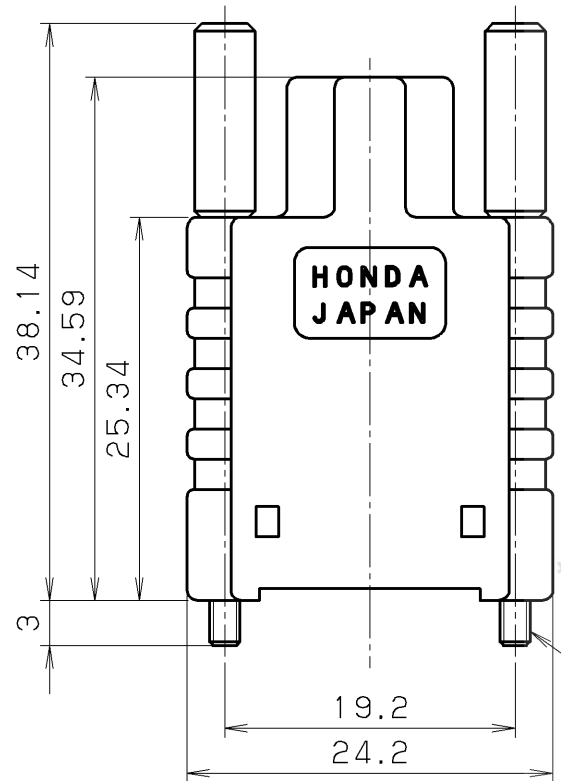
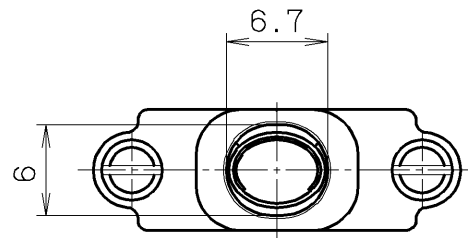
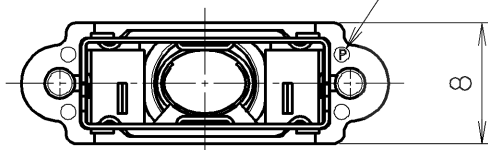


RoHS compliant



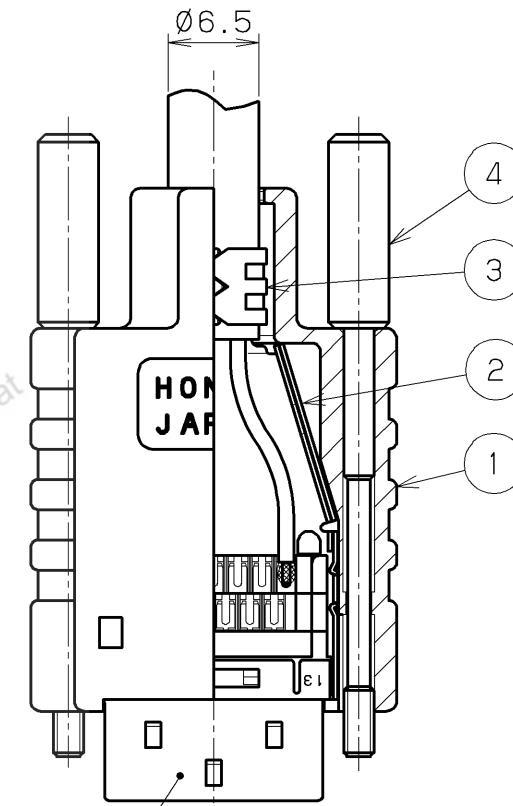
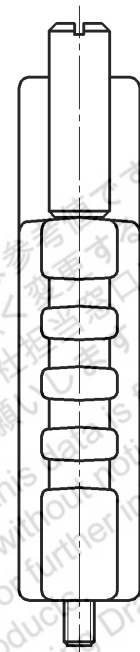
Screw size
M2X0.4

Identification mark



Note

1. Connector is not included in P/N: HDR-E26LPHP3+.
2. This drawing shows assembled for reference. Thumb screws are assembled to plastic cover. Inner shell A and B are supplied unassembled.



Connector (Note. #1)
HDR-E26F () G () +
HDR-E26M () G () +

After assembly drawing

					4	Thumb screw	Steel	2	Nickel plating	
					3	Inner shell A	Stainless steel	1	Nickel plating	
					2	Inner shell B	Stainless steel	1	Nickel plating	
	Jan.19 2018	S. M	Revise		1	Plastic cover	PBT RESIN	1		UL94V-0 black
LTR.	DATE	BY	REV.	DESCRIPT	No.	PART NAME	MATERIAL	QTY	FINISH	NOTE
DATE		SCALE		UNIT		3RD. A. P				
July.12.2017		2/1		mm (INCH)		HTK HONDA TSUSHIN KOGYO CO., LTD.				
APP. DATE&REV.		DR.		DE.		CHK.		CHK.		APP.
		S. MURAKAMI		S. MURAKAMI		S. YOSHIDA		—		Y. KATO
NAME						HDR-E type cable cover (RoHS)				REV.
PART NO.						HDR-E26LPHP3+				