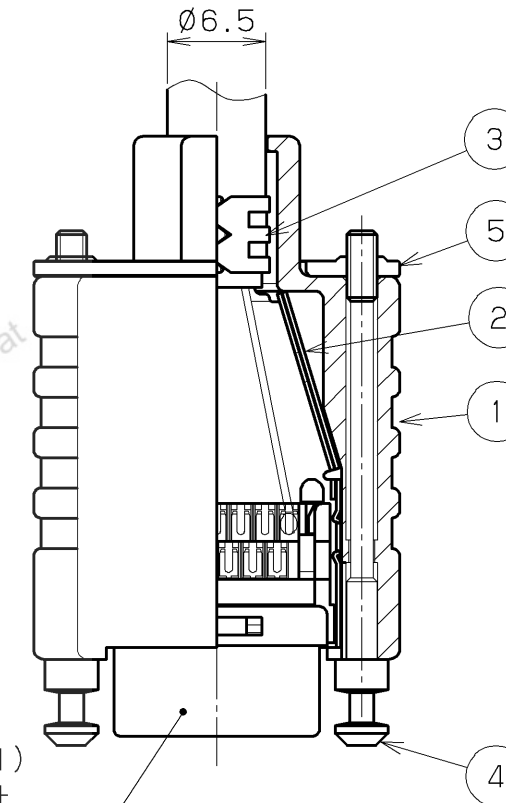
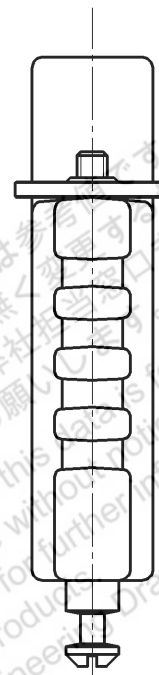
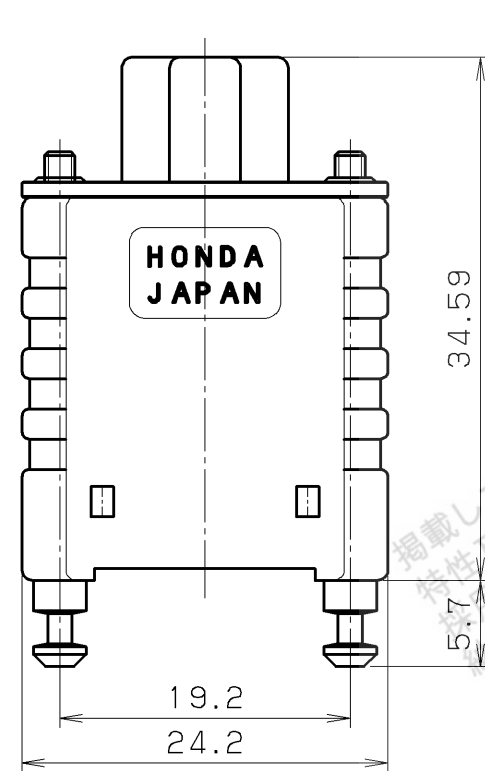
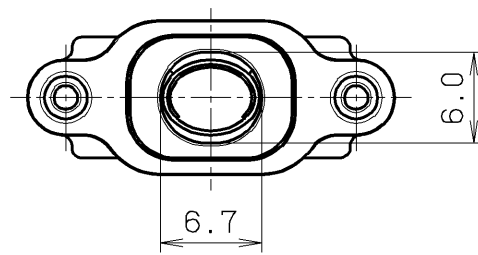


RoHS compliant

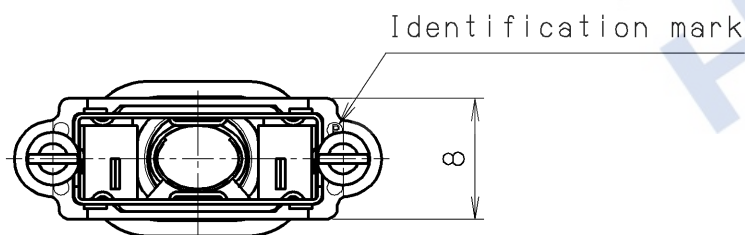


Connector (Note. #1)  
 HDR-E26F ( ) G ( ) +  
 HDR-E26M ( ) G ( ) +

AFTER ASSEMBLY DRAWING

掲載している商品の特性及び仕様は参考用です。用途及び仕様については、予告無く変更する場合があります。お問い合わせの際は弊社営業窓口までお問い合わせのうえ、特約のご検討やご注文の際は弊社の営業窓口までお問い合わせをお願いいたします。  
 The product information in this drawing is for reference only.  
 This is subject to change without notice.  
 Contact our sales staff for further information before considering or ordering any of our products.  
 Please request Engineers drawing for the most current and accurate design information.

HTK



Note

1. Connector is not included in P/N: HDR-E26LPHPD+.
2. This drawing shows assembled for reference. Each parts are supplied unassembled.

LTR.	DATE	BY	REV.	DESCRIPT	No.	PART NAME	MATERIAL	QTY	FINISH	NOTE
					5	PLATE (FOR LOCK SCREW)	STEEL	1	NICKEL PLATING	$t = 1.0$ M2 X Ø 0.4
					4	LOCK SCREW	STEEL	2	NICKEL PLATING	—
					3	INNER SHELL A	STAINLESS STEEL	1	NICKEL PLATING	—
					2	INNER SHELL B	STAINLESS STEEL	1	NICKEL PLATING	—
	Jan. 19 2018	S. M	Revise		1	PLASTIC COVER	PBT RESIN	1	—	UL94V-0 BLACK

DATE	SCALE	UNIT	3RD. A. P	HTK HONDA TSUSHIN KOGYO CO., LTD.						
July. 12. 2017	2 / 1	mm (INCH)		NAME	HDR-E TYPE CABLE COVER (RoHS)					
APP. DATE&REV.				DR.	DE.	CHK.	CHK.	APP.	PART NO.	REV.
				S. MURAKAMI	S. MURAKAMI	S. YOSHIDA	—	Y. KATO	HDR-E26LPHPD+	