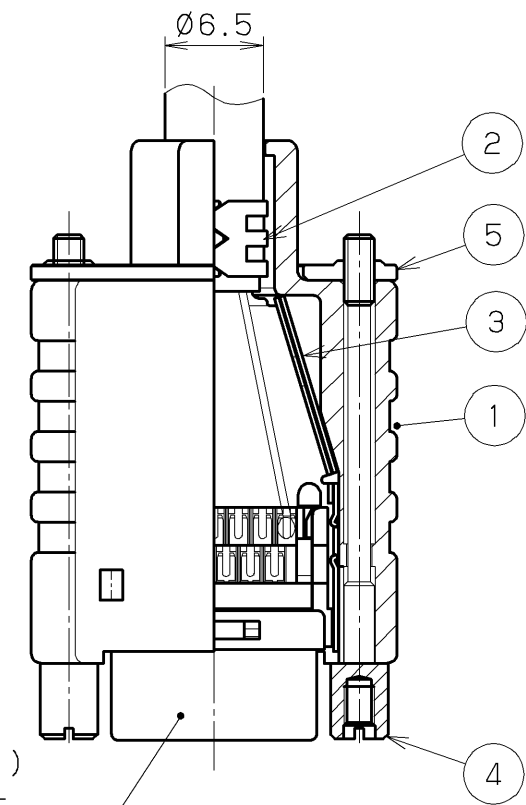
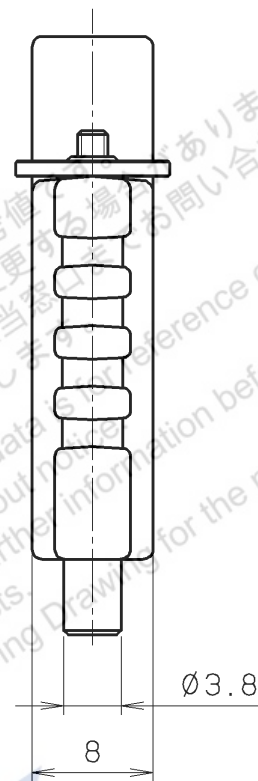
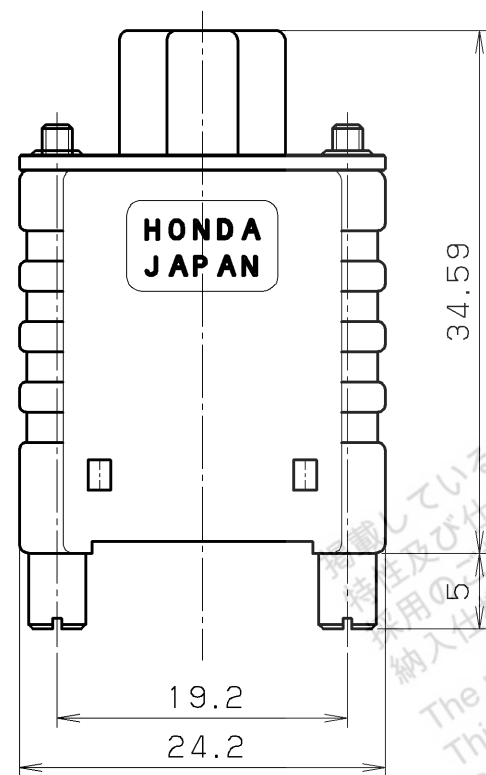
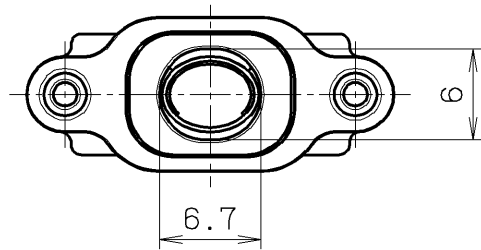


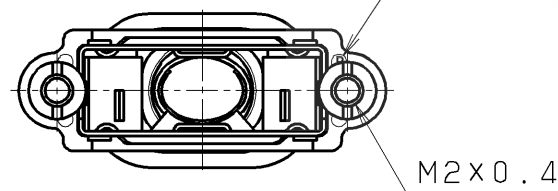
RoHS compliant



Connector (Note. #1)
HDR-E26F () G () +
HDR-E26M () G () +

After assembly drawing

Identification mark



Note

- Connector is not included in P/N: HDR-E26LPHPC+.
- This drawing shows assembled for reference. Each parts are supplied unassembled.

The product information in this data sheet is for reference only. This is subject to change without notice. Please request Engineering Design information.

LTR.	DATE	BY	REV.	DESCRIPT	No.	PART NAME	MATERIAL	QTY	FINISH	NOTE
					5	Plate (For lock screw)	STEEL	1	Nickel plating	t=1.0 M2X0.4
					4	Lock screw	Stainless steel	2		
					3	Inner shell B	Stainless steel	1	Nickel plating	
					2	Inner shell A	Stainless steel	1	Nickel plating	
	Jan.19 2018	S. M	Revise		1	Plastic cover	PBT RESIN	1		UL94V-0 Black

DATE	SCALE	UNIT	3RD. A. P	HTK HONDA TSUSHIN KOGYO CO., LTD.	
July.12.2017	2/1	mm (INCH)		NAME	HDR-E type cable cover (RoHS)
APP. DATE&REV.				PART NO.	HDR-E26LPHPC+
DR.	DE.	CHK.	CHK.	APP.	REV.
S. MURAKAMI	S. MURAKAMI	S. YOSHIDA	—	Y. KATO	