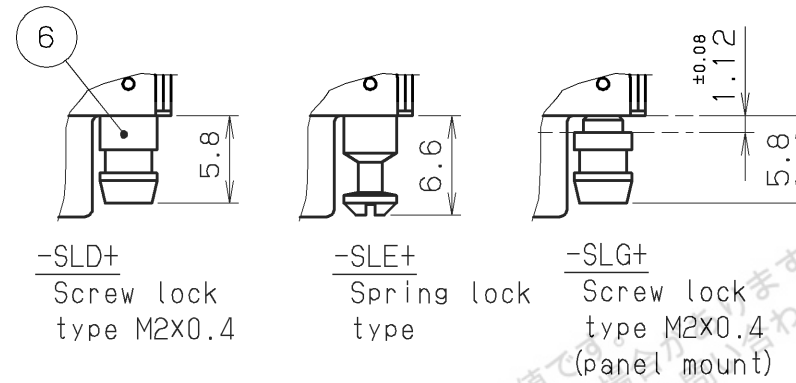


Lock screws

Part No.	Type	Note
HDR-EC()LMDT()+		
HDR-EC()LMDT()-SLD+	Screw lock type	
HDR-EC()LMDT()-SLE+	Spring lock type	
HDR-EC()LMDT()-SLG+	Screw lock type (Panel mount)	See note. #4



1. Contact plating

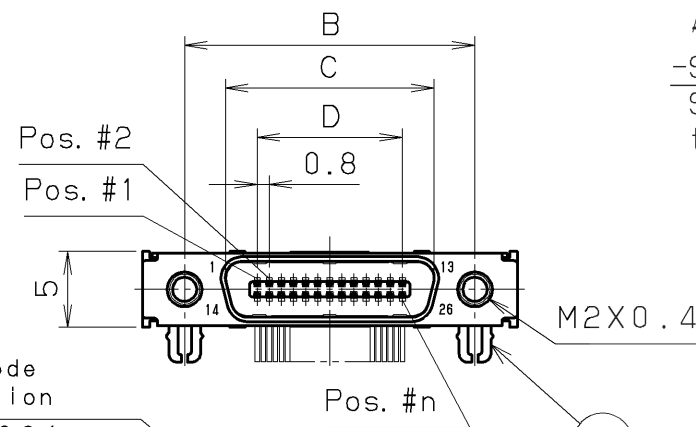
Part No.	Mating area	Termination area
HDR-EC()LMDTG1-()+	Gold 0.76μm min.	Gold 0.05μm min.

Underplating: Nickel plating 1.3μm min.

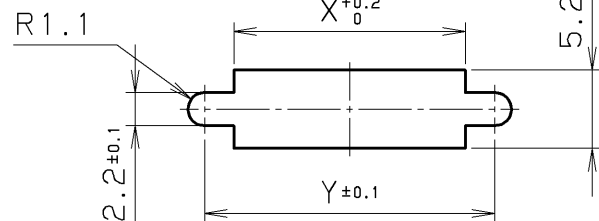
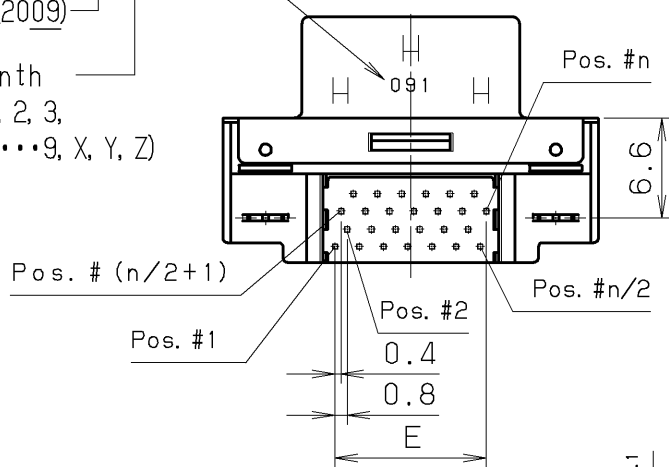
2. Mating connector
 HDR-EC26FDT()+ / HDR-EC26LFDT()+
 HDR-EA26LFYP()+
 HDR-E26FAG1+
 HDR-E26FSG1+

3. Specification
 Rated current 0.5A
 Rated voltage 125V AC (r. m. s.)

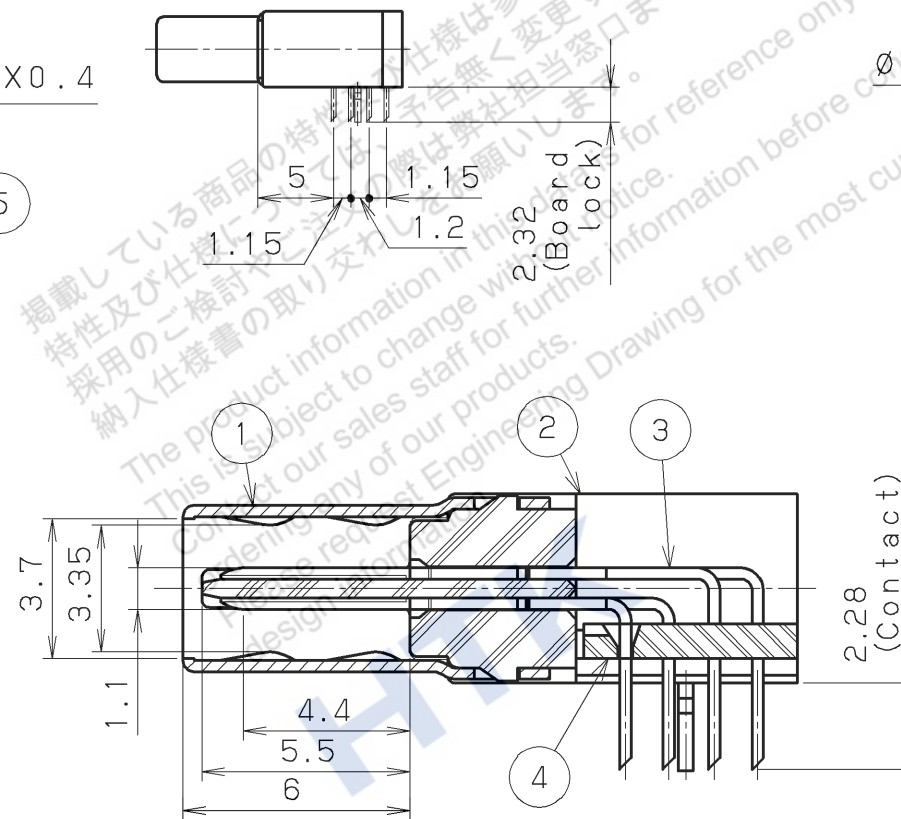
4. Two lock screws are supplied with a connector.
 (P/N: HDR-EC()LMDT()-SLG+)



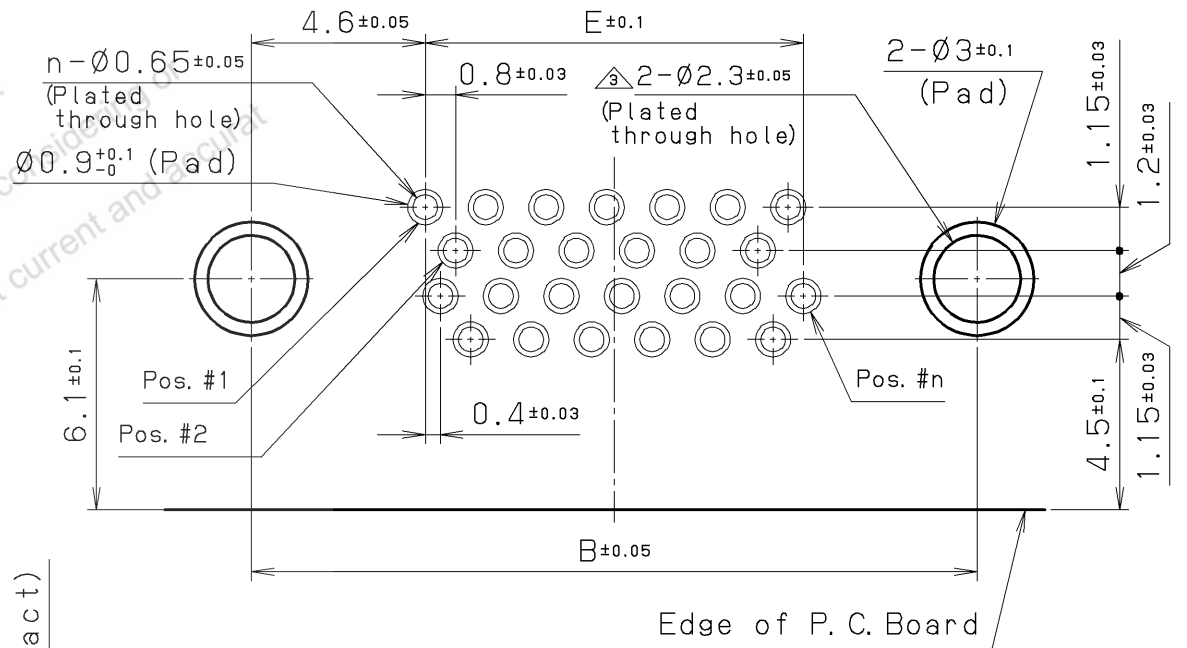
Date code indication
 091
 Year (2009)
 Month (1, 2, 3, ...9, X, Y, Z)



Recommended panel cut-out dimensions (t=1.12±0.08)



Contact detail



Recommended P.C.B. layout (Mount side view) t=1.6

6	Lock screw	Steel	2	Nickel plating	
5	Board lock	Phosphor bronze	2	Nickel plating	
4	Bracket	High temperature resin	1		UL94V-0 Black
3	Male contact	Phosphor bronze	n	Note. #1	
2	Insulator	High temperature resin	1		UL94V-0 Black
1	Shell	Steel	1	Nickel plating	

DATE	BY	REV.	DESCRIPT	No.	PART NAME	MATERIAL	QTY	FINISH	NOTE
May. 7 2009	H. A.		Changed tolerance.						
Jan. 30 2009	H. A.		Revised.						
Dec. 25 2008	H. A.		Remove contact sequence.						

LTR.	DATE	BY	REV.	DESCRIPT	No.	PART NAME	MATERIAL	QTY	FINISH	NOTE
	DATE		SCALE		UNIT	3RD. A. P	HONDA TSUSHIN KOGYO CO., LTD.			
	May. 26. 2005		2/1		mm (INCH)					
	APP. DATE&REV.									
	DR.	DE.	CHK.	CHK.	APP.	NAME	0.8mm spacing right-angle male connector (RoHS)			
	H. AIZAWA	H. AIZAWA	K. TAKAHASHI		K. KASAI	PART NO.	HDR-EC()LMDT()-()+	REV.		3C

Part No.	n (No. of pos.)	A	B	C	D	E	X	Y
HDR-EC26LMDTG()-()+	26	24.8	19.2	13.8	0.8x12=9.6	10	15.3	19.2
Dimensions								