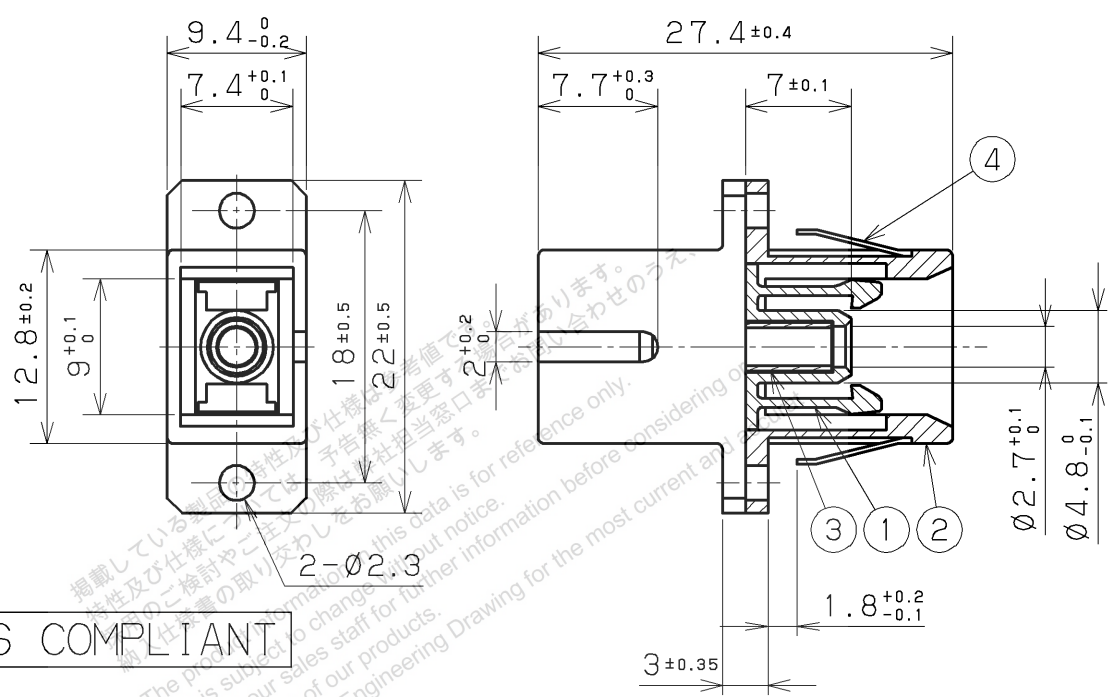


Mounting Hole Size (t=1.6)



RoHS COMPLIANT

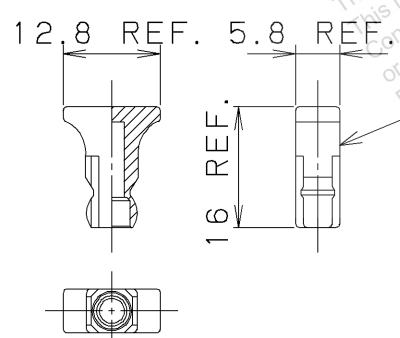


Table 1

Part No.	Material of No. (3)	Color of No. (2) and (5)
LGC-A301	Phosphor Bronze	Blue
LGC-A303	Zirconia	(For PC, AdPC) \triangle
LGC-A303G	Zirconia	Green (For APC) \triangle

\triangle Note 1) Insertion loss is 0.3dB or less.

⑤ Cap (S=1/1)

LTR.	DATE	BY	REV.	DESCRIPT	No.	PART NAME	MATERIAL	QTY	FINISH	NOTE
\triangle	DEC 10 2008	S.S		Changed materials	5	Cap	PBT Resin \triangle	2	—	Attachment
\triangle	FEB 15 2008	Y.O		Added Note	4	Plate	Stainless Steel	1	—	—
\triangle	FEB 14 2008	Y.O		Added Part No.	3	Alignment Sleeve	(See Table 1)	1	—	—
					2	Adaptor Housing	PBT Resin	2	—	—
					1	Sleeve	PBT Resin	2	—	Color:Blue

DATE	SCALE	UNIT	3RD. A. P	HONDA TSUSHIN KOGYO CO., LTD.					
Apr. 09. 2002	2/1	mm (INCH)		NAME		SC-A Type Adaptor			
APP. DATE&REV.				PART NO.		LGC-A30 ()			
DR.	DE.	CHK.	CHK.	APP.					
S. SEK1	—	T. YOSHIZAKI	T. KOISO	T. EGUCHI					