

TABLE 1

PART NO.	PLATING	
	CONTACT AREA	OTHERWISE
LPC-F113()-500R	GOLD 0.2 μ m min OVER NICKEL 1 μ m min	NICKEL 1 μ m min
LPC-F114()-500R	TIN 0.8 μ m min OVER COPPER 1 μ m min	

TABLE 2

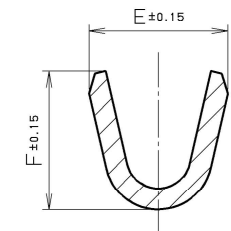
PART NO.	COMPATIBLE WIRE		MANUAL CRIMPING TOOL
	CORE WIRE	INSULATION DIA. RANGE	
LPC-F11()S-500R	AWG#32	0.6	KP-339S
LPC-F11()N-500R	AWG#28~32	0.7~1.0	KP-339N
LPC-F11()L-500R	AWG#22~26	0.9~1.1	KP-339L

TABLE 3

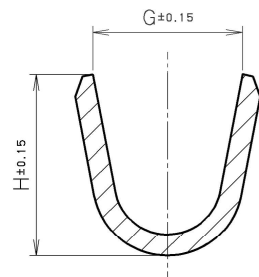
PART NO.	E	F	G	H
LPC-F11()S-500R	1.3	1.3	1.4	1.3
LPC-F11()N-500R	1.3	1.3	1.4	1.7
LPC-F11()L-500R	1.8	1.8	1.5	2.1

NOTE 1. AS FOR THE SPEC, SEE TABLE #2, #3.

2. CONTINUOUS TERMINAL FOR MANUAL CRIMPING TOOL.
(505PCS/REEL)



SECTION AA' (20/1)



SECTION BB' (20/1)

△										
△										
△	MAY.23.2015	S. IJIMA	REVISE		CONTACT	PHOSPHOR BRONZE	505	SEE TABLE #1		
LTR.	DATE	BY	REV. DESCRIPT	No.	PART NAME	MATERIAL	QTY	FINISH	NOTE	
	DATE		SCALE	UNIT	3RD. A. P	HTK HONDA TSUSHIN KOGYO CO., LTD.				
	AUG.07 (1991)		10/1	mm (INCH)						
	APP. DATE&REV.									
DR.	DE.	CHK.	CHK.	APP.	NAME	FEMALE CONTACT				
S. IJIMA	S. IJIMA	—	—	Y. KATO	PART NO.	LPC-F11() ()-500R				REV 1C