

PACKAGING OF CLAMP

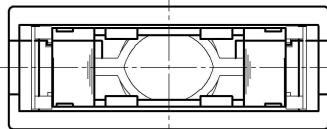


TABLE 1

PART NO.	SCREW SIZE	APPLICABLE CABLE O. D.
PCR-E20SPF1	M2	Ø8.5
PCR-E20SPF1A	M2.3	Ø6.2

No.	PART NAME	MATERIAL	QTY	FINISH	NOTE
7	SPRING LOCK	STAINLESS STEEL	2		
6	⊕ PAN HEAD SCREW	STEEL	2	NI PLATING	ATTACHMENT SEE TABLE 1
5	CABLE CLAMP	STEEL	2	NI PLATING	ATTACHMENT
4	COVER A	PC	1		UL94V-0 GREY
3	COVER B	PC	1		UL94V-0 GREY ATTACHMENT
2	HEX. NUT	STEEL	2	NI PLATING	M1.7
1	⊕ PAN HEAD SCREW	STEEL	2	NI PLATING	M1.7 ATTACHMENT

NOTE 1. THIS PART IS INCLUDE SPRING LOCK AND HEX. NUT IN COVER A. THE OTHER PARTS ATTACHES.

改版 L.T.R.	年月日 DATE	変更者 BY	変更内容 REV. DESCRIPT	番号 No.	部品名称 PART NAME	材質 MATERIAL	数量 QTY	処理 FINISH	備考 NOTE
年月日 DATE	JAN.26(2001)	尺度 SCALE	2 / 1	単位 UNIT	mm (INCH)	3角法 3RD. A. P	本多通信工業株式会社 HONDA TSUSHIN KOGYO CO., LTD.		
製 DR.	図 DE.	計 CHK.	検 CHK.	承 APP.	名称 NAME		PCR-E TYPE CABLE COVER FOR 20 POS.		
M. HIGUCHI	T. SATO	Y. OTANI		K. SATO	製 番 PART NO.		PCR-E20SPF1 ()		